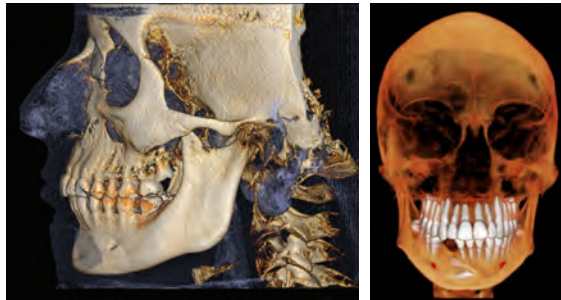


Complete Imaging Solution for the Orthodontic Practice

3-D and 2-D Orthodontic Imaging Options

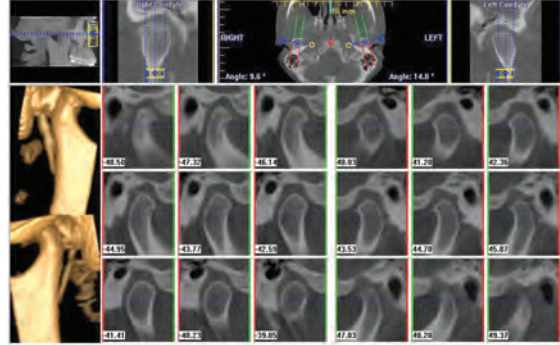
The ability to capture distortion-free 3-D views of the entire anatomy gives orthodontists the accurate tools to determine the most effective course of treatment.

The leading Cone Beam 3-D system has selectable options for 3-D and 2-D imaging that meet the radiographic needs of the orthodontic patient. Scanning volumes range from 4cm to 13cm in height up to 17cm



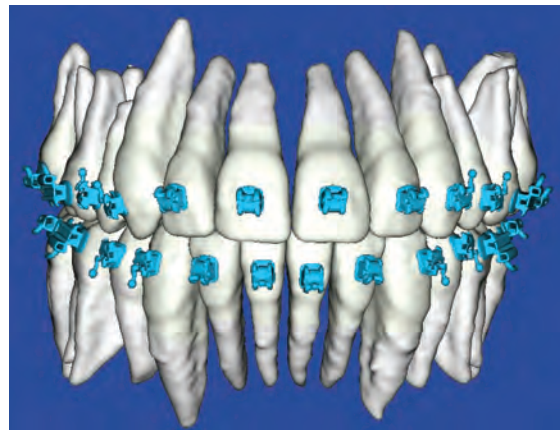
by 23 cm with the Extended Field of View option that captures anatomically accurate, cephalometric 3-D images of the entire skull in varying resolutions. The patient's progress can be monitored with the system's 5-second, low dose scan. Plus, the i-CAT® has traditional 2-D pan functionality.

**One i-CAT® scan offers
all of the views needed
for a complete orthodontic
workup in just seconds.**



Designed specifically with orthodontic imaging requirements in mind, one i-CAT® scan offers all of the views needed for a complete orthodontic workup in just seconds - from lateral and frontal cephs, SMV, and orthogonal images, to panoramic airway and spinal views, all with low radiation output.

i-CAT® images help dentists to explore TMJ joints and the paranasal sinuses, discovering hidden conditions including supernumeraries, root resorption, and impactions - seen from every angle. The CBCT data can be translated into digital study models and used for CAD/CAM appliance applications, such as SureSmile®.





Communication at Its Best

Patient education, facilitated by 3-D scans, is an integral part of the orthodontic process. The images, capable of being rotated, enlarged, sliced, and enhanced, are seen and understood with amazing clarity. Using a virtual, 3-D tour, orthodontists can show their patients (and their parents) their teeth, mouth and surrounding vital

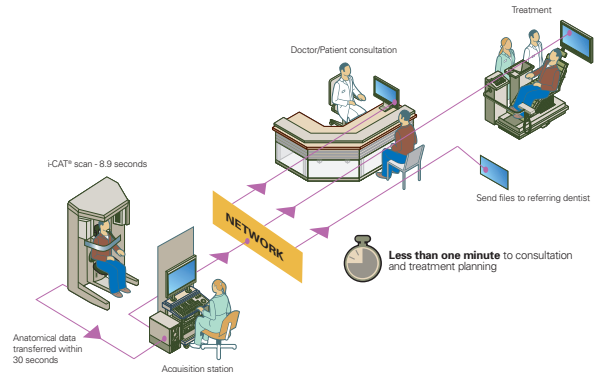


structures in a way that is unattainable with 2-D methods. This effective patient education can result in increased case acceptance. Plus, all images can be quickly shared with colleagues within the free and freely-shareable i-CATVision™, now featuring Quantum IQ™ image enhancement.



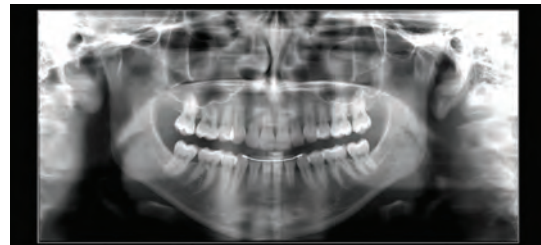
**The i-CAT® delivers -
accurate information
for faster planning and
more predictable
treatment results.**

Workflow in Both Dimensions

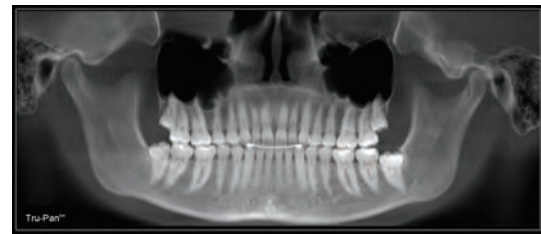


With scans that take less than a minute to capture and reconstruct patient care and practice workflow are improved.

As an added benefit, i-CAT® offers options in 2-D imaging. When a panoramic view is necessary, the i-CAT® offers two options: A traditional 2-D pan function and Tru-Pan™, a patented program that, within seconds, delivers precise, "true" pans from 3-D scans that are anatomically accurate, clear, and detailed.



Traditional 2-D pan



Tru-Pan™

**For more information on the i-CAT®, please visit
www.i-CAT.com.**