

Imaging Sciences International Announces Tru-Pan™ for i-CAT® – A Time-Saving Breakthrough In Cone Beam 3-D Technology

The maker of the leading [i-CAT](#) Cone Beam 3-D system introduces the industry's first patented, one-click volumetric pan.

Hatfield, PA (July 31, 2009) [Imaging Sciences](#) is proud to introduce [Tru-Pan](#), another breakthrough in Cone Beam Technology for the award-winning i-CAT. Tru-Pan is revolutionary software that yields precise “true” panoramic views from 3-D scans.

Developed to meet the needs of dental professionals who require quick and easy pan creation from existing 3-D scans, Tru-Pan delivers anatomically accurate and precise panoramic images with optimal clarity and detail plus time savings over traditional arch detection methods found in today's 3-D imaging programs.

Remarkable Detail and Clarity in Panoramic Views

Tru-Pan's advanced reconstruction of unique anatomic landmarks automatically creates a custom, optimized focal trough specific to each patient. This focal trough detection reveals a new level of detail that delivers consistently crisp and clear views of root tips and crowns, including the incisor regions, and sinuses — all within one panoramic image.

Optimized Images with Just One Click

Tru-Pan's panoramic images are created with just one click of the mouse. The automatic custom focal arch detection works in conjunction with the patient's 3-D data to quickly and efficiently extrapolate “true” and precise panoramic views. These consistent and optimal results save minutes of valuable clinical time over manual and semi-automatic arch setting techniques.

Easy Integration

Time-savings extends to Tru-Pan's easy integration. Available as an optional feature in the i-CATVision™ software, the easy, one-click function triggers automatic reconstruction with no additional training for clinicians or team members.

Dr. Terry Sellke, Grayslake, IL-area orthodontist and national lecturer on the application of business principals to the practice of orthodontics, shares the following on his experience with the image quality and time saving properties of Tru-Pan: *“The central theme for what I teach is that whatever you can do to get a better result in less time is always a winner. With Tru-Pan, you spend less time to achieve what is clearly a superior pan x-ray.”*

Imaging Sciences has become a leader in Cone Beam 3-D technology, in part, by investing in research and development to provide dentists with products that have true clinical value. *“Tru-Pan represents our commitment to creating cutting-edge tools that not only raise the level of diagnostics and treatment planning, but also streamline clinical procedures thereby improving efficiency for dental teams,”* states Chuck Ravetto, Vice President of Marketing for Imaging Sciences.

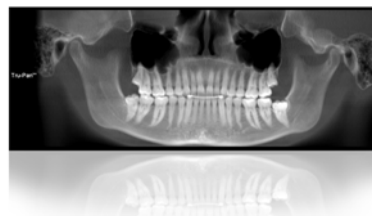
To learn more about Tru-Pan and its remarkable pan views, visit www.Tru-Pan3D.com or watch the [Tru-Pan video](#) demo now!

About **Imaging Sciences International**

Serving the dental industry since 1992, [Imaging Sciences](#), is at the global forefront in the development and manufacturing of the computer-controlled dental and maxillofacial radiography products, and internationally recognized by highly regarded dentists and radiologists as one of the most innovative companies in dental imaging. The company's marquee product, the i-CAT[®], is a leader in Cone Beam 3-D dental imaging creating anatomically accurate three-dimensional images at a significantly lower cost and less radiation than traditional CT scans. The system offers clinicians enhanced features for highly effective treatment planning and surgical predictability. As manifested in its dedication to education, the manufacturer is committed to meeting the needs of practicing clinicians and those dedicated to life-long learning.

Media Contact: Jackie Raulerson jackie.raulerson@danahermail.com

i-CAT[®]



Tru-Pan[™]